

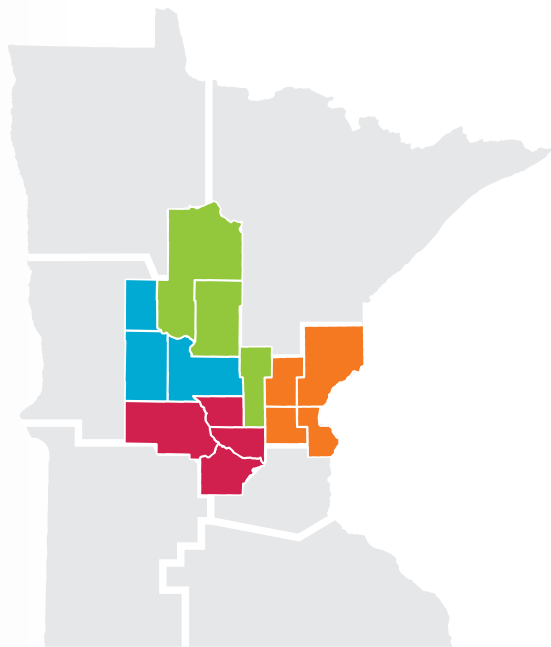
# 2013 Annual Report

For the period Jan. 1, 2013 – Dec. 31, 2013

## Our Mission

### *Powering possible*

to help CENTRAL MINNESOTA  
people **build** and **sustain**  
THRIVING COMMUNITIES.



## *Who We Are*

Created in 1986 by local leaders and The McKnight Foundation, we are one of six Minnesota Initiative Foundations. Through leadership programs, grants and business investments powered by local generosity, we work to strengthen the communities, families and economy of Central Minnesota.

## *How We Serve*

The Initiative Foundation is proud to serve the 14 counties of Central Minnesota that include 160 hometowns and two tribal nations, each with its own unique character and local assets. Through generous donations and hard-working hometown initiative we . . .

- *Provide loans to businesses that create quality jobs.*
- *Award grants to nonprofits, governments and schools.*
- *Build public-private partnerships that lead to action.*
- *Help generous people give back to their communities.*
- *Publish information on local trends and solutions.*

## Our Results



# 27 Years of Impact

1986-2013

Invested  
**\$43.4 million**  
through **904** loans and  
investments in locally  
owned businesses



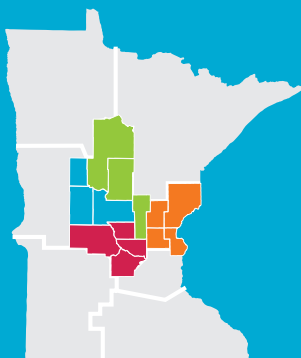
Awarded  
**704**  
scholarships  
totaling  
**\$623,172**

Made  
**4,249 grants**  
totaling  
**\$26  
MILLION**

Secured  
**11,956**  
*living-wage*  
*jobs*

Provided training  
and assistance to  
**6,415**  
**COMMUNITY  
LEADERS**

Assisted with the  
establishment and  
management of  
**75 new  
Turn Key  
Funds** during  
the past 27 years



Returned **\$4.52**  
to the region through grants  
and lending investments  
**for every \$1 given**

Experienced asset  
growth of  
**88%**  
during the past decade

## Our People

Dear Friends,

We're delighted with the Foundation's accomplishments during the past year. With your help, through your commitment and giving spirit, we've seen the Foundation's endowment grow to \$44.4 million and total assets reach \$60.8 million.

That's real money that gets reinvested in Central Minnesota. For every \$1 that comes in, an average of \$4.52 goes out to the 14 Central Minnesota counties that we call home. Along the way in 2013 we've freshened our brand, launched a dynamic new website with real-time access to hosted charitable funds, and we've fortified our business information systems to better serve you.

We've also welcomed three new members to our 15-member board of trustees: John J. Babcock of St. Cloud, Rick Baueryly of Sauk Rapids and Steve Shurts of Cambridge.

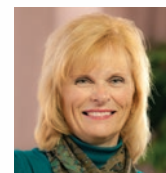
The work we do is for you. It's why we dedicate ourselves every day to effectively balance the Foundation's investments. We want to help power our economy and create quality living-wage jobs. We want to provide resources and expertise to bring out the best in our communities. And we want to give leaders the tools they need to drive change.

Because our goal is simple: We want to make Central Minnesota a destination of choice to live, work and play.

Thank you, as always, for your past and future support.



Linda Eich DesJardins,  
Board Chair



Kathy Gaalswyk,  
President

The Initiative Foundation is an equal  
opportunity lender, provider and employer

## Board of Trustees



**Linda Eich DesJardins,**  
**Chair**  
Eich Motor Company



**Larry Korf,**  
**Vice-Chair**  
DeZURIK



**John E. Babcock**  
The Bank of Elk River



**John J. Babcock**  
Rotochopper



**Mayuli Bales**  
Casa Guadalupe &  
Catholic Charities



**Rick Bauerly**  
Granite City Equity



**Charles Black Lance**  
Central Lakes College



**Reggie Clow**  
Clow Stamping



**Pat Gorham**  
Gorham Companies



**Lee Hanson**  
Gray Plant Mooty



**Dan Meyer**  
Atomic Learning



**Earl Potter**  
St. Cloud State  
University



**Steve Shurts**  
East Central Energy



**Traci Tapani**  
Wyoming Machine



**Wayne Wolden**  
City of Wadena

"In the year ahead the Initiative Foundation will be making great strides in adding and improving technology—from a video tutorial platform to strengthen economic, community and organizational development to business system enhancements that will improve services for new and existing donors."

**– Larry Korf, 2014 Board Chair**

## Foundation Staff

**Kathy Gaalswyk**  
President

**Kristi Ackley**  
Program Assistant for  
Organizational Development

**Kendra Botzek**  
Turn Key Specialist

**Dan Bullert**  
Business Finance Manager

**Lynn Bushinger**  
Chief Financial Officer & Treasurer

**Chris Fastner**  
Senior Program Manager for  
Organizational Development

**Tammy Fillippi**  
Early Childhood Associate

**Dan Frank**  
Senior Program Manager  
for Community & Economic  
Development

**Andrea Goedderz**  
Organizational Development  
Specialist

**Sharon Gottwalt**  
Business Finance Assistant

**Don Hickman**  
Vice President for Community &  
Economic Development

**Linda Holliday**  
Vice President for Organizational  
Development

**Jolene Howard**  
Information Systems Coordinator  
& Program Assistant

**Lois Kallsen**  
Office & Facilities Coordinator

**Michelle Kiley**  
Community and Economic  
Development Specialist

**Terri Konczak**  
Early Childhood Dental Network  
Specialist

**Kris Kowalzek**  
Accounting Associate

**MaryAnn Lindell**  
Executive Assistant

**Amanda Magnan**  
Organizational Development  
Assistant

**Bob McClintick**  
Marketing and Communications  
Manager

**Katie Riitters**  
External Relations Assistant

**Julie Schueller**  
Finance Assistant

**Alyson Twardowski**  
Communications and Donor  
Services Assistant

**Sandy Voigt**  
Development Officer

**Amanda Whittemore**  
VISTA Program Associate

# Our Numbers

## 2013 *Financial Summary*

### Sources of Funds: \$13,913,302

Investment Income	\$ 6,523,028	47%
Grants & Contributions	\$ 4,167,051	30%
Business Financing Revenue & Repayments	\$ 3,075,358	22%
Other Operating Revenue	\$ 147,865	1%

### Uses of Funds: \$8,145,345

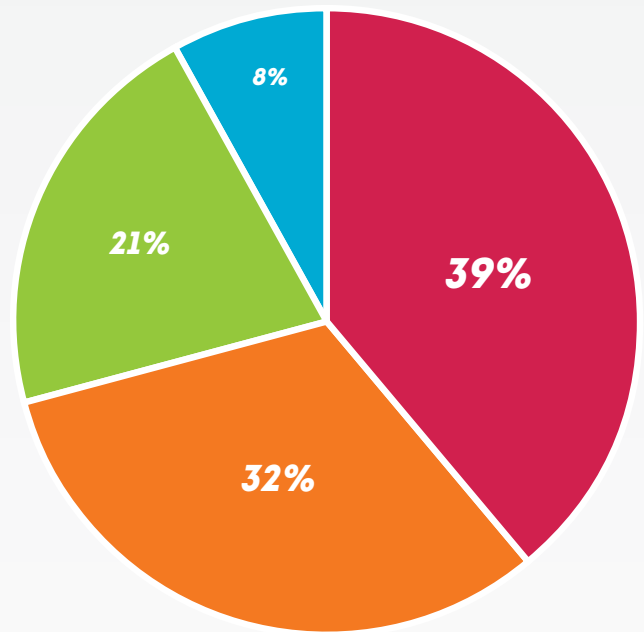
Grants, Scholarships & Training Programs	\$ 3,569,890	44%
Business Investments	\$ 2,796,731	34%
Foundation Operations	\$ 1,141,136	14%
Fund Development	\$ 411,555	5%
Special Projects & Other	\$ 226,033	3%

#### Training Programs

#### Expenses Incurred\*

Volunteers in Service to America	\$ 338,332
Thriving Communities & Early Childhood Initiatives	\$ 332,970
Thriving Organizations Partnership	\$ 277,428
<b>TOTAL</b>	<b>\$ 948,730</b>

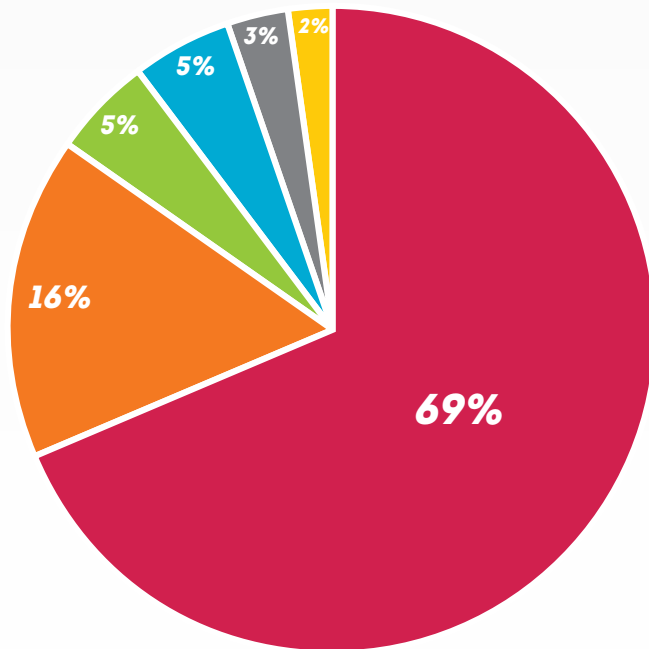
\*Excludes grants & scholarships



#### Business Financing Sectors

**Investment Total \$2,139,302**

• Manufacturing/Construction	39%		\$ 827,002
• Healthcare/Service	32%		\$ 690,500
• Technology	21%		\$ 450,000
• Retail/Wholesale	8%		\$ 171,800



#### Grants & Scholarships Categories

**Investment Total \$ 2,610,596**

• Community & Donor Funds	69%		\$ 1,803,668
• Innovation Fund	16%		\$ 419,433
• Early Childhood /Thriving Communities	5%		\$ 128,486
• Organizational Effectiveness	5%		\$ 130,000
• Economic Opportunity	3%		\$ 90,323
• Scholarships	2%		\$ 49,250



A complete audit report prepared by CliftonLarsonAllen, LLP is available upon request.

# Our Friends

## Giving to— *and through*— the Initiative Foundation in 2012-2013

### Honor Roll

#### Crimson \$50,000+

Blandin Foundation  
Corporation for National & Community Service  
Morgan Family Foundation  
Otto Bremer Foundation  
The McKnight Foundation  
USDA Rural Development

#### Partner \$30,000+

Bremer Banks  
Connexus Energy  
County of Cass  
Stearns Electric Association  
West Central Telephone Association

#### Principal \$20,000+

County of Crow Wing  
County of Pine  
County of Stearns  
County of Wright  
GNP Company  
Minnesota Power, an Allete Company

#### Executive \$15,000+

County of Morrison  
County of Sherburne  
Schlagel, Inc.

#### Leader \$10,000+

City of Little Falls  
City of Saint Cloud  
County of Benton  
County of Isanti  
County of Todd  
East Central Energy  
Eich Motor Company  
Kathy & Neal Gaalswyk  
Larson Boats, LLC  
U.S. Bancorp Foundation

#### Director \$7,500+

Arvig  
Cambridge Medical Center on behalf of Allina Health System  
City of Baxter  
Clow Stamping Company

#### Associate \$5,000+

AgStar Fund for Rural America / AgStar Financial Services  
Brainerd Lakes Area Community Foundation  
Chisago County HRA-EDA  
City of Elk River  
City of Monticello  
City of Saint Michael  
City of Sartell  
CliftonLarsonAllen LLP, Saint Cloud  
Consolidated Telecommunications Company

Earl & Christine Potter  
Falls Fabricating  
Farmer's & Merchants State Bank  
First National Bank of Milaca  
Lakeland Mold Company, Inc.  
Marco, Inc.  
Matt & Jeanne Kilian  
MINPACK, Inc.  
NOR-SON, Inc.  
Peoples National Bank of Mora  
Pequot Tool & MFG., Inc.  
Pine Country Bank, Little Falls  
Rita & Everett Sobania  
Stern Manufacturing  
The Hyduke Foundation of the Saint Paul Foundation on behalf of the Peoples Bank of Commerce

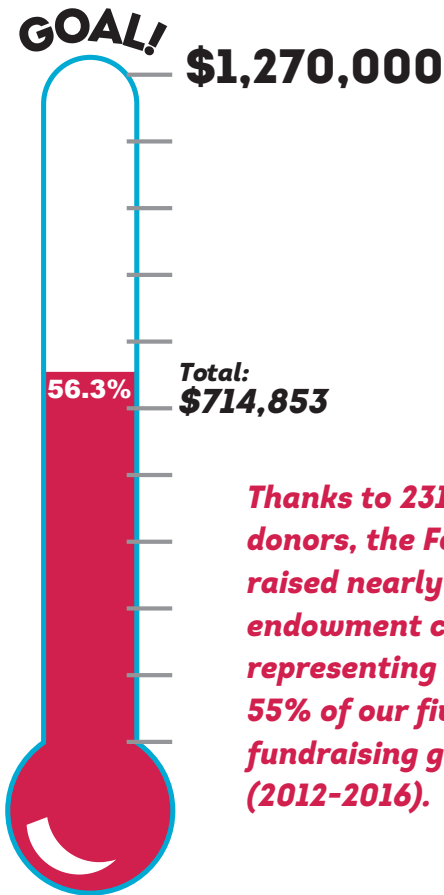
#### Entrepreneur \$2,500+

Atomic Learning, Inc.  
BankVista

Bruce & Mary Fogle  
City of Big Lake  
City of Brainerd  
City of Milaca  
City of Pierz  
City of Rockford  
City of Saint Joseph  
City of Sandstone  
CliftonLarsonAllen LLP, Brainerd  
County of Mille Lacs  
County of Wadena  
Daniel & Sue Meyer  
Dave Gruenes  
DeZURIK, Inc.  
Gene & Bernie Waldorf  
Jo & Larry Korf  
Lee & Jan Hanson  
LINDAR Corporation  
Midwest Security & Fire  
Randall State Bank

#### Investor \$1,000+

Bank of the West  
Citizens State Bank of Waverly  
City of Albany  
City of Albertville  
City of Annandale  
City of Becker  
City of Braham  
City of Breezy Point  
City of Cambridge  
City of Clarissa  
City of Cold Spring  
City of Crosslake  
City of East Gull Lake  
City of Foley  
City of Lake Shore  
City of Long Prairie  
City of Maple Lake  
City of Melrose  
City of Menahga  
City of Mora



**Thanks to 231 generous donors, the Foundation has raised nearly \$715,000 in endowment contributions, representing more than 55% of our five-year fundraising goal (2012-2016).**

City of Randall  
City of Sauk Centre  
City of Sauk Rapids  
City of Staples  
City of Swanville  
City of Verndale  
City of Waite Park  
Crow Wing Power  
Dan & Annette Frank  
Dan Bullert  
Diamond Tool & Engineering, Inc.  
Don Hickman & Sandra Kaplan  
Donlar Construction  
Happy Dancing Turtle  
Jan Tenold  
John E & Nancy Babcock  
Landmark Community Bank  
Larry Lundblad  
Linda Holliday & Harry Brodmarkle  
McDowall Company  
The late Fran & Mil Voelker

Minnesota Economic Development Foundation  
Pat & Carmel Gorham  
Rotochopper, Inc  
Sandy Voigt  
Shelly Funeral Chapels Inc

#### Under \$1,000

Alison Edgerton  
Alpine Cabinetry, LLC  
Anita & Brad Hollenhorst  
Barb & Duane Anderson  
Brian Pederson & Julie Schueller  
Catherine E. Jackson  
Central McGowan, Inc.  
Cheryl A. Key  
Chris Fastner & Kathy Hakes-Fastner  
Christopher & Beth Thorson  
Chuck & Lois Head  
Chuck & Sharon Gottwalt

Continued on next page



# Our Friends

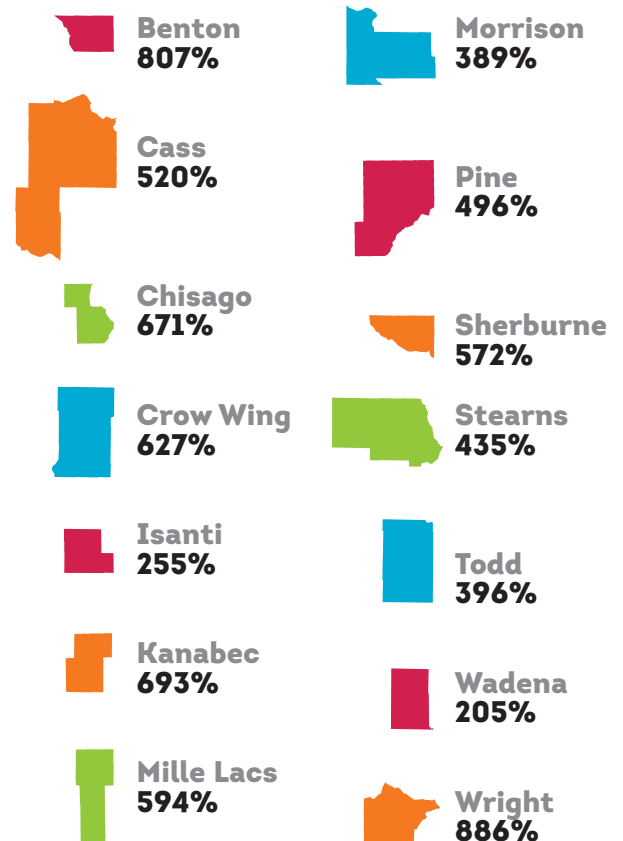
Continued from previous page

City of Avon	City of Grey Eagle	City of Pillager	Douglas Larsen & Cathy Hartle	Mike & Connie Wood
City of Backus	City of Hackensack	City of Remer	Elizabeth F Larsen	Municipal Development Group
City of Belgrade	City of Hanover	City of Rice	Eric Rittmann	Pamela Mahling
City of Bertha	City of Harding	City of Rock Creek	Gray Plant Mooty	Ray & Gwynne Gildow
City of Bowlus	City of Henriette	City of Rockville	James & Wendy Shear	Robert & Marilyn Obermiller
City of Burtrum	City of Hewitt	City of Royalton	James D Muchow	Robert & Marsha Bunger
City of Cass Lake	City of Hinckley	City of Saint Martin	Jason Bernick	Robert McLean
City of Center City	City of Holdingford	City of Saint Rosa	Jeff Fromm	Sara E Dahlquist
City of Chickamaw Beach	City of Howard Lake	City of Sebeka	Jolene Howard	Southwest Initiative Foundation
City of Clearwater	City of Isanti	City of South Haven	Katie & Tom Riitters	Steve & Katy Botz
City of Cokato	City of Isle	City of Taylors Falls	Katrina L. Pierson	Tamara Feige Filippi
City of Eagle Bend	City of Jenkins	City of Upsala	Kenneth & Kristine Kowalzek	The Moran Family Fund of the Central MN Community Foundation
City of Eden Valley	City of Longville	City of Wahkon	Kristin Ackley	The Whitney Foundation
City of Emily	City of Montrose	City of Walker	Lee Goderstad	Tricia & John Holig
City of Fifty Lakes	City of Motley	City of Waverly	Len & Lois Kallsen	Walter & Adele Munsterman
City of Freeport	City of Nimrod	Core Value Consulting, LLC	Lynda Woulfe	Wayne & Lori Wolden
City of Garrison	City of Onamia	Dianne C Tuff	Lynn & Darren Bushinger	William & Diane Scarince
City of Genola	City of Otsego	Dick & Mimi Bitzan	Martin & Susan Paradeis	
City of Grasston	City of Pequot Lakes	Don & Deanna Engen	MaryAnn & Peter Lindell	

## Return on Investment

For every \$1 that comes in, an average of \$4.52 goes out.  
From Inception to 12/31/2013

	Donations	Investments	ROI	Per \$1 ROI
Benton	434,000	3,502,000	807%	\$8.07
Cass	777,000	4,038,000	520%	\$5.20
Chisago	380,000	2,552,000	671%	\$6.72
Crow Wing	1,529,000	9,586,000	627%	\$6.27
Isanti	1,173,000	2,991,000	255%	\$2.55
Kanabec	147,000	1,021,000	693%	\$6.95
Mille Lacs	639,000	3,799,000	594%	\$5.95
Morrison	1,658,000	6,447,000	389%	\$3.89
Pine	620,000	3,079,000	496%	\$4.97
Sherburne	789,000	4,515,000	572%	\$5.72
Stearns	1,926,000	8,380,000	435%	\$4.35
Todd	846,000	3,353,000	396%	\$3.96
Wadena	2,624,000	5,390,000	205%	\$2.05
Wright	575,000	5,100,000	886%	\$8.87
<b>TOTAL</b>	<b>14,119,000</b>	<b>63,755,000</b>	<b>452%</b>	<b>\$4.52</b>



# Our Partners

## Loans & Equity Investments

In 2013, the Foundation invested \$2.1 million in 20 locally owned businesses. Through those loans, 390 high-quality jobs were secured.

Becker Screenprint, LLC—Becker  
Biomatrix, Inc.—Princeton  
Bollin Properties, LLC dba Cowgirl Tuff Company—Cokato  
Cavanmor, LLP dba Netgain Technology, Inc.—St. Cloud  
Chad P. Nelson Law office, LLC - Lindstrom  
Collins Brothers Towing of St. Cloud, Inc.—Sartell  
Economic Development Authority of Little Falls—Little Falls  
Franconia Restaurant Enterprises, Inc.—Taylor Falls  
Gateway Manufacturing, LLC dba Salo Manufacturing—Menahga  
Gloria DeBenedet LLC—St. Cloud

Hashiro Childcare Center, Inc—St. Cloud  
K & G Property Partners, LLC—St. Cloud  
KRL Holdings, LLC dba National Precision Machining and Engineering—Sebeka  
Minnesota Heritage House, Inc.—Little Falls  
Neal's Motorsports, LLC—Long Prairie  
Plug Technologies—Hanover  
Roden Iron, Inc.—Milaca  
Sneak Attack's Games, LLC—St. Cloud  
Spychala Real Estate, LLC dba Albany Family Dentistry, P.A.—Albany  
Tusen Tack—Braham

## Turn Key Funds

The Foundation currently hosts 75 Turn Key component funds, which are local endowments (permanent investment accounts with annual returns) through which donors create legacies of charitable support for current and future generations.

### Community Funds

Delano Community Foundation (DCF)  
Greater Pine Area Endowment (GPAAE)  
Isle Area Community Foundation (IACF)  
Morrison County Area Foundation (MCAF)  
Rum River Community Foundation (RRCF)  
Staples-Motley Area Community Foundation (SMACF)  
Three Rivers Community Foundation (TRCF)

### Scholarship Funds

Alternative Sources of Energy Fund  
Archie & Isabelle Powell Family Memorial Scholarship Fund (TRCF)  
Betty Ford Menzel Scholarship Fund  
Beverly M. Pantzke Scholarship Fund  
Bob & Pauline Johnson Memorial Scholarship Fund  
Bob Wright Memorial IFPA Scholarship Fund  
Holdingford Scholarship Fund  
Little Falls Scholarship Fund  
Madden's Pine Beach Scholarship Fund  
Pillager Scholarship Fund  
Shawn Grittner Memorial Scholarship Fund  
Staples Knights of Columbus-Lloyd & Marion Giddings Scholarship Fund (SMACF)  
William & Ethel Nelson-Zimmerman Memorial Scholarship Fund  
ZES Scholarship Fund (TRCF)

### Donor-Advised Funds

Anderson Brothers Family Fund

Bob & Marsha Bunger Endowment Fund  
Edeburn Family Fund  
Gaalswyk Family Fund  
Granite Equity Partners Fund  
Hanowski Family Fund (MCAF)  
Jane & Patrick Mitchell Foundation  
John & Bonnie Schlage! Endowment  
Josh Richardson Youth Arts Fund (TRCF)  
Julius & Tracy Kurpius Fund (SMACF)  
Loren & Kathy Morey Family Fund (SMACF)  
Mark Wood Foundation (MCAF)  
Mel & Jeanette Beaudry Fund (TRCF)  
Quiet Oaks Hospice House Fund

### Nonprofit Endowment Funds

Big Birch Lake Endowment Fund  
Conservancy Fund of Big Fish Lake Association Fund  
Conservancy Fund of Roosevelt and Lawrence Area Lakes Association  
Creating Entrepreneurial Opportunities (CEO) Fund  
Cuyuna Lakes Education Foundation  
Fish Trap Lake Endowment Fund  
Friends of Sherburne National Wildlife Refuge Fund  
Gull Chain Preservation Endowment Fund  
Horizon Health Partnership in Life Fund  
Lake Region Conservation Club Fund (MCAF)  
Land and Waters Preservation Trust  
Leech Lake Area Watershed Foundation  
Longville Area Community Foundation Endowment  
Minnesota Pioneer Park Endowment Fund

Paws & Claws Animal Shelter  
Sacred Heart-Knights of Columbus Fund (SMACF)  
Wright County Historical Society Fund

### Field of Interest Funds

Delano Emergency Family Fund  
Family Farm Fund  
Manufacturing Fund of Central MN

### Committee Advised Funds

Crow Wing Environment Protection Advised Fund  
Nicholas P. Koenig H.E.R.O. Foundation  
Pillager Education Foundation  
Sauk Rapids-Rice Education Foundation Thrive Fund

### Special Projects

Oakland Cemetery Fund  
Sartell Wheel Park Fund  
Sartell DOGPAC Fund  
Trees for Wadena Fund  
Veteran's Art Project Fund  
Wadena Regional Wellness Center Fund

### Business Loan Funds

Menahga Loan Fund  
Princeton Economic Development Loan Fund  
St. Cloud State University Microlending Fund  
Todd-Wadena Economic Development Loan Fund  
Wadena Tornado Relief Loan Fund

# Our Partners

## Grant Awards

In 2013, the Foundation awarded nearly \$850,000 to 133 organizations in support of their critical services and social enterprise activities in our region.

AccountAbility MN, St. Paul	City of Taylors Falls Economic Development Commission	Northland Area Family Service Center, Remer
Adult Day Services Inc, Bemidji	City of Waverly	Northland Community & Technical College Foundation, Thief River Falls
Allina Associated Foundation, Cambridge	Community Aid of Elk River (CAER)	Northwest MN Foundation, Bemidji
Amherst Wilder Foundation, St. Paul	Community Grassroots Solutions, St. Cloud	Onanegozie Resource Conservation and Development Council, Inc., Cambridge
Annandale Area Community Team	Council on Foundations, Baltimore, MD	Our Saviour's Lutheran Church, Sebeka
Arc Midstate, St. Cloud	Crow Wing County, Brainerd	Pierz School District
Arc United Inc, St. Cloud	Cuyuna Range Youth Center, Crosby	Pine City School District
Baldwin Township, Princeton	Dreams United/Sueños Unidos, Long Prairie	Pine River-Backus Family Center
BestPrep, Brooklyn Park	Eagle's Healing Nest, Sauk Centre	Pine River-Backus School District
Big Brothers Big Sisters of Central MN, St. Cloud	Elk River School District	Pine Technical College, Pine City
Boys & Girls Club of the Leech Lake Area, Cass Lake	Faith In Action for Cass County, Hackensack	Pregnancy Resource Center of Cambridge,
Boys & Girls Clubs of Central MN, St. Cloud	Faith in Action Greater Sherburne County, Becker	Prevent Child Abuse MN, St. Paul
Brainerd Baxter Youth Center	FamilyWise Services, Minneapolis	Princeton Area Visionary Committee
Brainerd Lakes Area Chamber of Commerce Education Association	First American Financial Services on behalf of WCEDA, Sebeka	Regents of the University of Minnesota, Minneapolis
Brainerd Lakes Area Economic Development Corp,	Friendship Ventures, Annandale	Region Five Development Commission, Staples
Brainerd School District	Goodwill/Easter Seals MN, St. Paul	Rise Inc, Spring Lake Park
Cass County Economic Development Corporation, Backus	Great River Family Promise, Elk River	Rivers of Hope, Monticello
Catholic Charities of the Diocese of St. Cloud	Greater MN Partnership, St. Paul	RiverWorks Community Development Organization, Rockford
Center for Nonprofit Excellence & Social Innovation (CNESI), St. Cloud	Greater St. Cloud Development Corporation,	Royalton School District
Central Lakes College Foundation, Brainerd	Greater Twin Cities United Way, Minneapolis	Saint Cloud Neighborhood Coalition
Central MN Habitat for Humanity, St. Cloud	Hands Across the World, St. Cloud	Saint Cloud State University
Central MN Sustainability Project	Happy Dancing Turtle, Pine River	Saint Cloud State University Foundation,
Child Care Choices Inc., St. Cloud	Horizon Health Inc, Pierz	Salem Lutheran Church, Deerwood
Children's Law Center of Minnesota, St. Paul	HOWA Family Center, Walker	Second Harvest North Central Food Bank Inc., Grand Rapids
City of Avon	Industries Incorporated, Mora	Seven County Senior Federation, Mora
City of Big Lake	Isanti County, Cambridge	Southwest Initiative Foundation, Hutchinson
City of Braham	Junior Achievement of the Upper Midwest, Maplewood	St. Cloud Technical and Community College,
City of Brainerd	Kanabec County, Mora	Staples Motley School District
City of Chisago	Kinship Partners Inc, Brainerd	Stearns Benton Employment & Training Council, St. Cloud
City of Clearwater	Lakes Area Interfaith Caregivers, Baxter	Stearns County Parks, Waite Park
City of Foley	Lakes Area Restorative Justice Project, Brainerd	Stearns County Soil & Water Conservation District (SWCD), Waite Park
City of Holdingford	Leech Lake Tribal College, Cass Lake	Todd County, Long Prairie
City of Howard Lake	Lutheran Social Service, St. Paul	Tri-County Action Program Inc, Waite Park
City of Jenkins	Melrose Lake Improvement Association	Tusen Tack, Braham
City of Little Falls	Metropolitan Economic Development Association (MEDA), Minneapolis	United Cerebral Palsy of Central MN, St. Cloud
City of Long Prairie	Mille Lacs County, Milaca	United Way of Central MN, St. Cloud
City of Longville	Mille Lacs Health System, Onamia	United Way of Crow Wing & Southern Cass Counties, Brainerd
City of Milaca	Minneosta Folklore Theater Inc, Walker	University of Minnesota, Minneapolis
City of North Branch	MN Assistance Council for Veterans, St. Paul	University of St. Thomas, St. Paul
City of Pillager	MN Council of Nonprofits, St. Paul	West Central Economic Development Alliance, Sebeka
City of Remer	MN Council on Foundations, Minneapolis	Wright County Economic Development Partnership, Rockford
City of Rockford	Northern Cass Developmental Achievement Center, Inc., Walker	
City of Rush City	Northern Pines Mental Health Center, Brainerd	
City of Sartell	Northern Technology Initiative dba GPS 45:93, Mora	
City of Staples	Northland Arboretum, Brainerd	